

# THE MOSAIC FACTORY

LET'S MAKE SOMETHING BEAUTIFUL



Kasba Collection

2022

# Kasba

## SQUARE MOSAICS OF 10x10 CM

Introducing the new Kasba collection! Mosaics that interpret craftwork and natural glaze in a creative and distinctive manner. Available in seven trend colours, with both a matt and glossy finish. An organic look and feel that radiates an authentic and elementary appeal. Something that particularly shows when the Kasba mosaics are applied on larger surfaces.





# Easy appliance, great result

Although larger than our usual collections, the Kasba mosaics are still supplied on sheets. This is also what distinguishes them from other tiles with a similar size: an easy appliance yet extremely luxurious look. The glossy version is eminently suitable for wall design while the matt stone surface is ideal for high traffic floors, thanks to R10/B slip resistance. The Kasba mosaics are particularly effective on larger areas, columns, and other structural elements, creating the effect of a tailored porcelain gown.



# ROOM FOR DETAILS

The Kasba collection portrays a play with colour and texture. From a discreet yet mottled white, which blends almost universally into any room, the colour spectrum extends to indigo and terra with clear hints of nature. An organic look that is enhanced by their texture, which is quite uneven and raw. During firing, an individual tile pattern is created for each mosaic. The result is a convincingly detailed play of surfaces, grounded and yet refined in a natural way.

The Kasba mosaics become an eyecatcher or a harmonious companion of various materials, like wood, concrete, and brass. The strong colours, like Forest Green and Ocean Blue, act as a statement in the design. The series add character to any room and fit as perfect in a bathroom or kitchen as they do in a restaurant or bar. Stunning and versatile yet approachable and timeless: we consider the Kasba collection as an essential asset to our range.

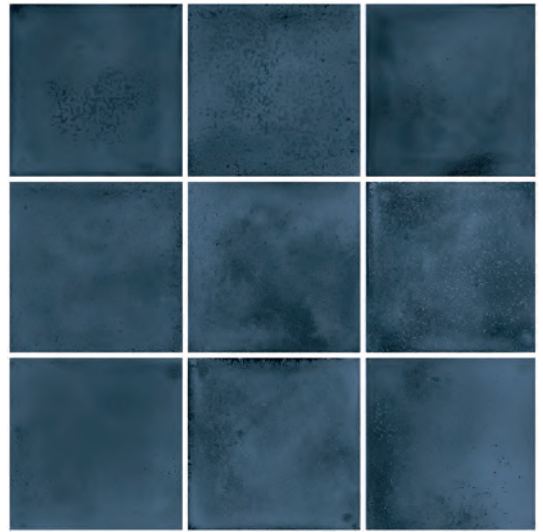




# KASBA MATT GLAZED PORCELAIN 10X10



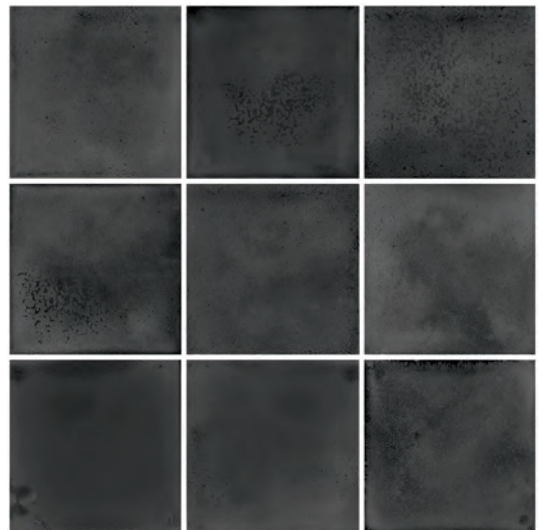
KAM10010 White Matt R10



KAM10725 Indigo Matt R10



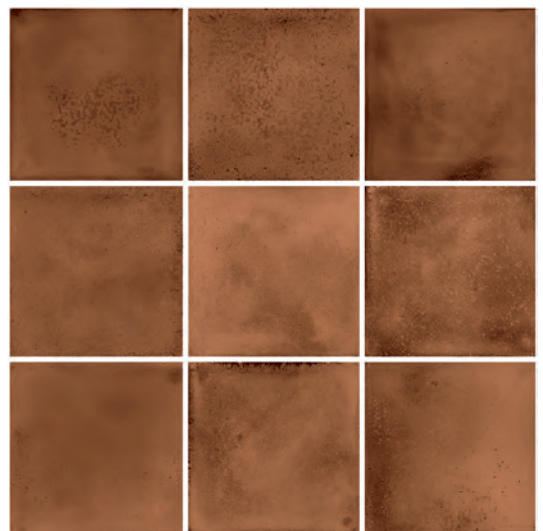
KAM10025 Ocean Blue Matt R10



KAM10925 Black Matt R10



KAM10525 Forest Green Matt R10

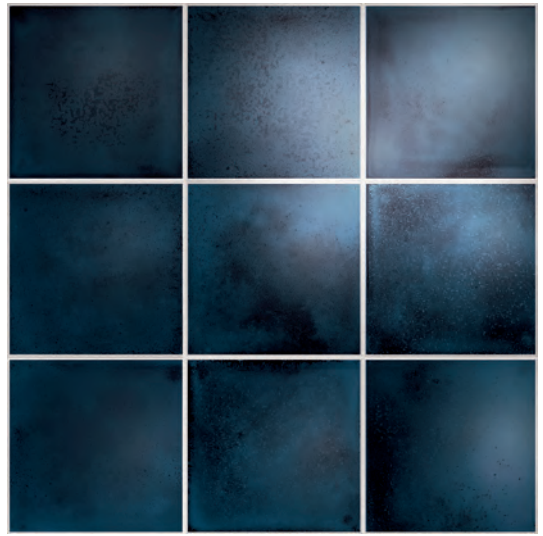


KAM10112 Terra Matt R10

# KASBA GLOSSY GLAZED PORCELAIN 10X10



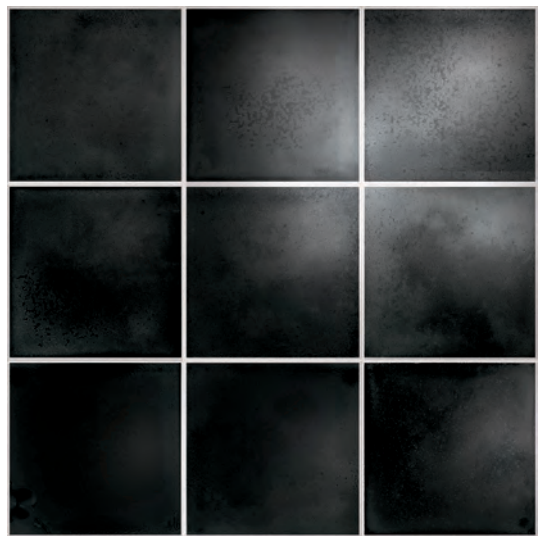
KAG10051 White Glossy



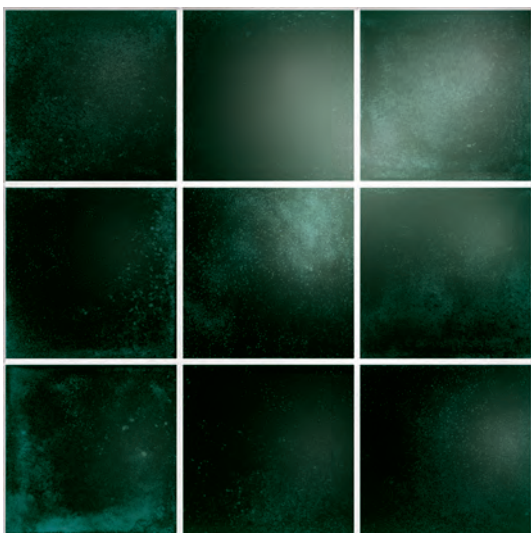
KAG10700 Indigo Glossy



KAG10125 Ocean Blue Glossy



KAG10915 Black Glossy



KAG10500 Forest Green Glossy



KAG10012 Terra Glossy



# SPECIFICATIONS

Glazed porcelain mosaics on mesh

Frost and chemical resistant. The glossy variant is suitable as wall tile, the matt variant can also be applied on high traffic floors (R10/B).

## Kasba Glossy & Matt

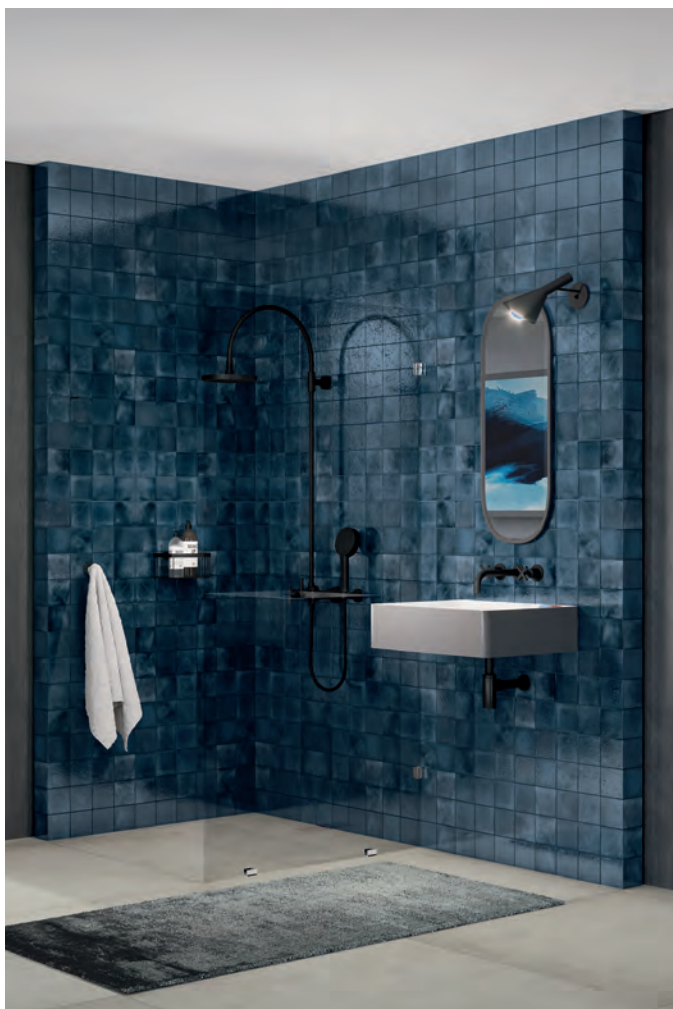
Tile size	Joint size	Sheet Size	Sheets/carton	M2/carton	Weight per unit	Weight per M2
9,7x9,7x6,5 mm	3,0 mm	297x297 mm	11	1,00 M2	13,80 kg/carton	13,80 kg/M2





# FIND INSPIRATION FOR YOUR PROJECT

And follow us on Pinterest and Instagram! Get a glimpse of our mosaics in different interior designs and see surprising combinations on our mood boards.





# About us



## LET'S MAKE SOMETHING BEAUTIFUL

For over 25 years UCI Union Ceramics International B.V. has been a specialist in the production and distribution of glass- and ceramic mosaic products.

The collections we offer are produced according to our specifications and high standards.

Under the registered brand name TMF® (The Mosaic Factory) our collection is sold in over 30 countries worldwide.

UCI has its head office, showroom and European warehouse in Nistelrode, the Netherlands and a Quality and Sourcing office in Singapore.

**Mission:** Making projects more beautiful and distinctive with affordable high quality mosaics.

**Vision:** We want to make our customers successful by following the market trends and offer them the right assortment in shape, colour and materials. UCI delivers exclusively through selected dealers.

